

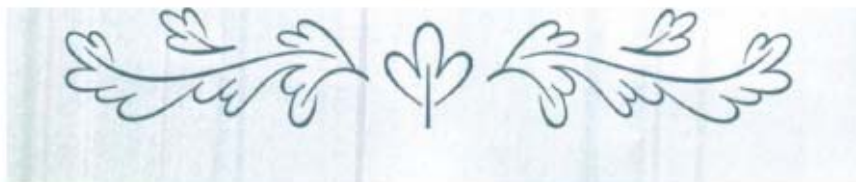
*5th Anniversary Issue*  
**Connecticut**  
COTTAGES & GARDENS

# The Magic Cottage

THE WELL-EDITED DÉCOR OF THIS FORMER FISHERMAN'S COTTAGE MAKES WAY FOR DRAMATIC WATER VIEWS

BY ANNETTE M. ROSE-SHAPIRO | PHOTOGRAPHS BY KEITH SCOTT MORTON





*Walk through the front door of this Sherwood Mill Pond cottage, and your eye sweeps through the large open space to the water views beyond. It's not just the wall of floor-to-ceiling windows on the far side of the first floor that draws you in—it's the well-edited gray, black and white color scheme that homeowner Carolena Petisi has honed over the many years and the many houses that she and husband Robert have renovated. But take a closer look—the décor offers plenty of interest on its own.*

**Rockin' It!** The views of Sherwood Mill Pond are beautiful in every season (Larréna). A rocker from Pier 1 with a Pottery Barn seat cushion is a comfortable place to take it all in. Purple potteries in an antique urn add a pop of color. **Guiding The Way** (An astrolabe (above) from the Southport/Westport Antiques Show gives a funky nautical accent to the home's entrance. See Resources.



**Split Personality** | The large kitchen island (this model custom-made by Casatelli Marble & Tile, along with an [Elkay faucet](#) and a sink from Klaff's), effectively separates the first floor kitchen and entertaining areas. The AGA stove from RED Appliances is the only visible appliance. The Bosch dishwasher and Liebherr refrigerator are concealed behind the custom West Mount Group's cabinetry. The stools at the end of the island were made by West Mount from Petisi's own design. The hanging light from Soloria Lighting illuminates the workspace. TV viewing takes place on the other side of the island and an antique writing desk separates the area from the "dining room." See Resources.

From the trim white exterior to the waterside deck, every element of the décor has been carefully considered. The cottage's 2,500 square feet have been rather ingeniously set up as separate zones with specific functions. Petisi, an accessories buyer, began to hone in on her monochromatic color statement early on. When her son was young, she went with all white, using slipcovers that could be easily washed and bleached. Eventually white gave way to black and then gray.

What makes this gray, black and white palette work so well are the many textures, patterns and accessories throughout the home, beginning with a wooden floor painted with Benjamin Moore's Floor & Porch in Kendall Gray. When the homeowners first purchased the cottage, the first floor was a maze of uninviting small, dark rooms. They opened it up to one large space, with a wall of French doors at the back revealing the ever-changing pond views. The medium-gray floors, white walls, mirrors and glass accessories create an almost liquid quality to the home's interior design, playing off the water outside.

A large kitchen island divides the first floor, with TV and dining areas to the left. The custom-made kitchen cabinetry was designed to conceal as many appliances as possible, and cabinets built into both sides of the island eliminate the need for having them overhead. Simple and inconspicuous hardware on the drawers also ensures a clean line. A free-floating marble backsplash brought along from a

previous home divides the island and creates a display area for a collection of silver teapots, and offers a place for guests to sit and watch dinner preparations.

A small sitting area at the back of the kitchen is Petisi's favorite place for relaxing with a book or taking in the view. It's also a good example of her editing process—the loveseat has been reupholstered at least 10 times and has been moved from house to house. She rethinks furnishings that she's had in other homes and decides how these pieces will fit into the current décor. Some are painted or reupholstered; many are used in totally new ways. A small desk with ornate marquetry that had been in the kitchen of a previous home has been painted flat gray and has a place in the master bedroom. Four vintage armchairs, now sporting Robert Allen white faux-leather coverings, sit in the TV area. Lamps with new silvery shades sit atop Oly Studio white resin side tables, reflecting the water and creating an effect so light it's as if you can see through the furnishings.

The clear glass ball is another design element found throughout the home. Petisi incorporates it into the décor in unexpected ways. A large glass ball from the end of a curtain rod was refitted to become the finial on the staircase. Two other zones, situated at the front of the room, a dining area and a "formal" living room, also feature this design object. A hollow glass globe sits atop the round white Oly Studio dining room table. The formal living room consists of four oversized



**Crystal Ball** | The staircase (Inial Gove 1217) was made with a solid glass ball from the end of the curtain rod. **It's My Secret** | Custom-made exterior-grade doors by TruStile (above concrete) conceal storage closets. The white table from Oly Studio and chairs from Design Within Reach create a dining area. **White On White** | Tiny bud vases with a single bloom from Botanica Floral Design (above floor) adorn an Oly Studio side table. **Designs For Living** | A stately clock from Elech van Breems presides over the "formal" living area (below) defined by four Mitchell Gold-Bob Williams chairs covered in fabric from Designer's Guild. The mannequin sculpture is from Lillian August. An ever-flowing antique urn and the floor lamp from Anthropologie continue the glass ball theme, while a photograph by Tre Cassetta complements the color scheme. See Resources.





**The Silvery Light** | An antique mirror (above left) from Petisi's extensive collection reflects light from the pond into the master bath. She silver-leafed two small stacking tables that hold bathroom accessories. The West Mount custom cabinet also has a marble countertop from Casatelli. **Water World** | A long soak in this Victoria & Albert tub from Klaff's (above center), combined with the expansive view of Sherwood Mill Pond, is the ultimate in relaxation. **Mirror, Mirror** | A large antique mirror (above right) dominates the downstairs powder room, making it appear more expansive. A substantial sink from Klaff's sits atop the West Mount cabinet. **The White Room** | Diffused light and an all-white décor (below) create a dreamy atmosphere in the second-floor salon. A Mitchell Gold+Bob Williams couch makes for comfortable lounging. A dresser is called into service as the media cabinet and a silver candelabra, Petisi's silver-leafed canvas and a chandelier from IKEA add formal touches to the room. See Resources.



**His Own Space** | Robert Petri's bathroom (see page 44) sits at the top of the second-floor landing. Wall sconces from Sotaria Lighting flank an antique frieze and a countertop from Casatelli Marble & Tile. See Resources.





**Room With a View** | The Mitchell Gold+Bob Williams chairs and Oly Studio table offer a place to sit and take in the view, while a large mirror reflects the light from the water. A custom-made Robert Allen headboard complements the bedding by Frette. See Resources

Mitchell Gold+Bob Williams armchairs, two more Oly Studio side tables, a glass globe floor lamp and a glass-filled urn as its centerpiece. "The clear glass adds sculptural interest without a lot of clutter or weight," says Petisi. "It seems to float. I like to think of it as liquid décor."

When Petisi opened up the first floor, what she gained in light she lost in storage space. But the dilemma of creating a place for all the accoutrements of living led to a solution that also increases the first floor's visual space. Custom mirrored French doors to the left of the dining area appear to lead outside, but instead are large storage closets holding everything from books to tableware to the vacuum cleaner. A small room originally housing the hot water tank is now a powder room with a large, ornate mirror, adding to the illusion of more space.

The second floor consists of several rooms with husband Robert's calm, cool bathroom at the top of the stairs; Solania wall sconces flank a framed mirror and decorative frieze. A closer on the stair landing is now the laundry area. The guest room and TV 'salon' both showcase Petisi's unconventional interior design solutions. "I didn't want to look at the cable box," she explains, "so I asked the carpenter to build a small white box that I could use as a cover. And why not add a candleabra, too!" In order to up the glamour quotient, Petisi painted a canvas in metallic

silver as a backdrop to the TV ensemble. Sheer white floor-to-ceiling curtains block the view of a neighboring house, while glass table lamps and a white upholstered sofa complete the ethereal atmosphere of the space.

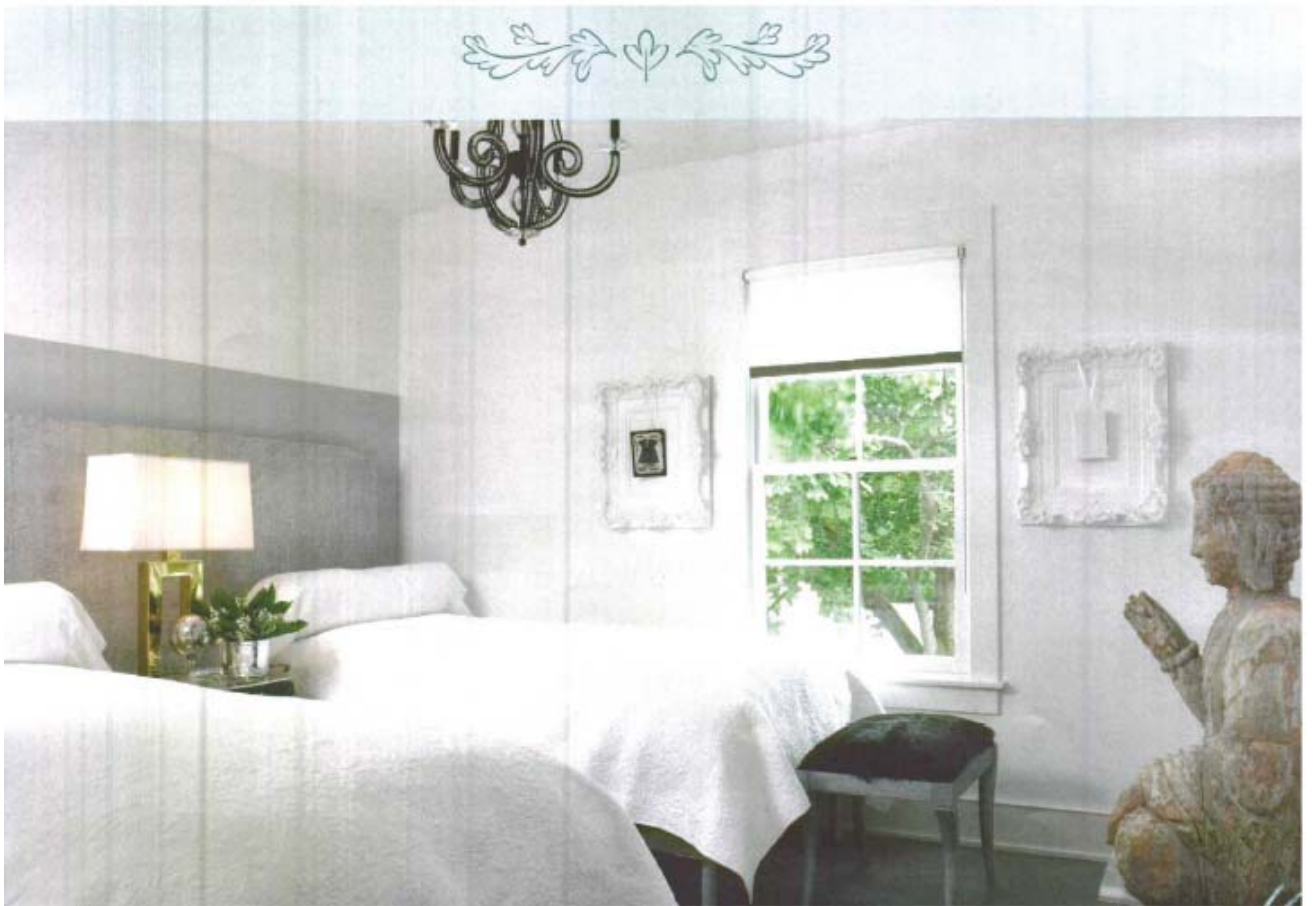
Painted canvas also plays a part in the guest room, appearing as a headboard behind a set of twin beds. Even though it covers the bottom half of one window, it still lets in a diffused light that lends to the room's peaceful setting. A witty art display hangs on either side of the other window; inside two ornate frames, painted white, are smaller canvases that Petisi changes from time to time.

An unexpected pop of color marks the entrance to the master bedroom. Antique doors with wrought iron inserts are still their original shade of green. And through those doors is the same expanse of water views enjoyed on the first floor, with two oversized Mitchell Gold+Bob Williams chairs—in a surprising shade of lavender—providing the room's seating area. The master bathroom's deep soaking tub also allows for utter relaxation with a view of the pond.

The cottage houses a wealth of its owners' personal design philosophy—keep it spare, dispense with clutter and keep it light. She has no desire to make it into a career, but Petisi's years of creating her homes' interior design helped turn a small, dark fisherman's cottage into a place of harmony and light. ☺



**Please Come In** | These antique doors (ABOVE LEFT), in a surprising shade of green, have moved from house to house with Petisi and create an elegant entrance to the master bedroom. **Shades Of Gray** | Petisi fashioned a headboard (ABOVE CENTER) from burlap—it was applied to a canvas with gesso and painted gray. She also decided to diffuse the light with another large canvas extending from wall to wall behind the headboard. **Always In Style** | A white frame (ABOVE LEFT) plays host to a revolving art show. This one displays a birthday gift from one of Petisi's 60 best girlfriends attending her "little black dress" party. **Welcome, Guests!** | A Solaria Lighting chandelier (BELOW) adds another silvery touch to the guest room. The large replica of the Buddha came from the 2002 Gift Show. See [Resources](#).



# Resources & More...

ITEMS PICTURED BUT NOT LISTED HERE ARE EITHER FROM PRIVATE COLLECTIONS OR HAVE NO ADDITIONAL DETAILS

(T) - Sources available through architects, interior designers and design professionals

**Decoration & Design Building** (D&D)  
879 Third Ave., NYC, (212) 799-5498, [www.dilbuilding.com](http://www.dilbuilding.com)  
**New York Design Center** (NYDC)  
300 Lexington Ave., NYC, (212) 679-9500, [www.nydc.com](http://www.nydc.com)

## ENTERTAINING

**Pages 26-27: Food**, Rebecca's Restaurant & Bar, Greenwich, (203) 532-9270. **Wine**, Horseneck Wines & Liquors, Greenwich, (203) 869-8944, [www.horseneck.com](http://www.horseneck.com). **Royal Crown Derby China**, Highland's of Greenwich, Greenwich, (203) 869-2127, [www.hoaglands.com](http://www.hoaglands.com). **William Yeoward Crystal**, Lux Bond & Green, Greenwich, (203) 629-0900, [www.lbgreen.com](http://www.lbgreen.com). **Flowers**, Daghighi Hosenen, Westport, (203) 254-6666. **Table**, Carole Gratale, through Edward Ferrell, D&D, NYC, (212) 758-5000 or [www.carolegratale.com](http://www.carolegratale.com).

## ANTIQUES

**Pages 34-36: Litchfield County Antiques Show**, Antiques Council, Warren, MA, [www.antiquescouncil.com](http://www.antiquescouncil.com). **Eve Stone Antiques, Ltd.**, East Haven, (203) 466-6665, [www.evestoneantiques.com](http://www.evestoneantiques.com). **Asiantiques**, Winter Park, FL, (407) 362-1023, [www.asiantiques.com](http://www.asiantiques.com). **Roberto Freitas American Antiques & Decorative Arts**, Stonington, (860) 535-1797, [www.robertofreitas.com](http://www.robertofreitas.com). **Jeff Bridgman Antiques**, Historic County, PA, (717) 502-1281, [www.jeffbridgman.com](http://www.jeffbridgman.com). **Dawn Hill Antiques**, New Preston, (860) 868-6033, [www.dawnhillantiques.com](http://www.dawnhillantiques.com).

## THE MAGIC COTTAGE

**Pages 62-69: Floor paint**, Floor & Porch in Kendall Charcoal, Benjamin Moore, [www.benjaminmoore.com](http://www.benjaminmoore.com). **Pages 64-65: Kitchen: Stove**, AGA, REO Appliances, Inc., Norwalk, (203) 838-7925, [www.aga-ranges.com](http://www.aga-ranges.com). **Refrigerator**, Liebherr, REO Appliances, Inc. **Dishwasher**, Bosch, REO Appliances, Inc. **Countertops**, Casatelli Marble & Tile, Norwalk, (203) 847-6880, [www.casatellimarbletile.com](http://www.casatellimarbletile.com). **Faucet**, single-lever top mount with pull-out hand spray, Elkay, Klaff's, Inc., South Norwalk, (203) 866-1603, [www.klaffs.com](http://www.klaffs.com). **Cabinets**, West Mount Custom Cabinets, West Haven, (203) 931-1033, [www.westmountgroup.com](http://www.westmountgroup.com). **Pulls**, Klaff's, Inc. **Lighting**, Salaria (T), Decatur, GA, (404) 508-1987, [www.salariahome.com](http://www.salariahome.com). **Living room: Chair fabrics**, Osborne & Little, Inc., through

Designers Guild (T), (203) 359-1500, [www.designersguild.com](http://www.designersguild.com). **Window shade**, Bridgeport Awning & Window Shade, (203) 333-4944. **Clock**, Eleish van Breems, Washington Depot, (860) 868-1200, [www.evbuniques.com](http://www.evbuniques.com). **Floor lamp**, Anthropologie, Westport, (203) 259-0043 and Greenwich, (203) 422-5421, [www.anthropologie.com](http://www.anthropologie.com). **Floral arrangement**, Botanica Floral Design Studio, Westport, (203) 226-0202, [www.kdflbotanica.com](http://www.kdflbotanica.com). **Dining room: Table**, Oly Studio (T), (775) 336-2100, [www.olystudio.com](http://www.olystudio.com). **Chairs**, Design Within Reach, Westport, (203) 227-9707, [www.dwr.com](http://www.dwr.com). **Doors**, TruStic custom, (866) 442-5302, [www.trustic.com](http://www.trustic.com). **Pages 66-67: Master Bath: Tub**, Victoria & Albert, Klaff's, Inc. or [www.vandabaths.com](http://www.vandabaths.com). **Custom cabinets**, West Mount Custom Cabinets. **Salon: Sofa**, Mitchell Gold + Bob Williams, Greenwich, (203) 661-4480, [www.mgoldbw.com](http://www.mgoldbw.com). **Tables**, Oly Studio (T). **Chandelier**, IKEA, New Haven, (203) 865-4332, [www.ikea.com](http://www.ikea.com). **Powder room: Custom cabinets**, West Mount Custom Cabinets. **Sinks**, Klaff's, Inc. **Faucets**, Axor by Hansgrohe, Klaff's, Inc. or [www.hansgrohe.com](http://www.hansgrohe.com). **Toilets**, low flow, Toto USA, (770) 282-8686, [www.totousa.com](http://www.totousa.com). **Page 68-69: Master bedroom: Headboard**, custom, Robert Allen (T), (800) 333-3777, [www.robertallendesign.com](http://www.robertallendesign.com). **Tables, chest and mirror**, Oly Studio (T).

## GENERATION GAP

**Pages 70-77: Westport Arts Center**, Westport, (203) 222-7070, [www.westportartscenter.org](http://www.westportartscenter.org). **Alberta Ciofielli**, [www.ciofielli.com](http://www.ciofielli.com). **Nathan Heiges**, <http://artysale.edu/NathanHeiges>. **Jahmane**, [www.artofjahmane.com](http://www.artofjahmane.com). **Paul Kaiser**, [www.facebook.com/pages/Paul-Kaiser-Artist/1345149446729](http://www.facebook.com/pages/Paul-Kaiser-Artist/1345149446729)?info. **Richard Klein**, [www.carengoldenfineart.com/artist/view/1092](http://www.carengoldenfineart.com/artist/view/1092). **Larry Silver**, [www.larrysilver.com](http://www.larrysilver.com).

## CAPTURING THE LIGHT

**Pages 78-85: Architecture**, Peter Glazer, PKG Design Build, Norwalk, (203) 866-2022. **Interior design**, Kristine Glazer, PKG Design Build. **Kitchen design**, Christopher Peacock Cabinetry, Greenwich, (203) 862-9333, [www.peacockcabinetry.com](http://www.peacockcabinetry.com). **Landscaping**, DeLalla & Associates, LLC, Ridgefield, (203) 431-2112, [www.delallalife.com](http://www.delallalife.com). **Page 80-81: Dining room: Chairs**, Bungalow Westport, (203) 227-1406. **Kitchen: Appliances**, Sub-Zero/Wolf, through Clarke Corporation, South Norwalk, (508) 435-

6226, [www.clarkecorp.com](http://www.clarkecorp.com). **Entryway: Custom door**, Victor's Fine Finishes, Norwalk, (203) 237-9246. **Pages 82-83: Living room: Windows**, Marvin Windows and Doors, through Kings End Lumber, Darien, (203) 655-2525 or [www.marvin.com](http://www.marvin.com). **Desk table**, Bungalow. **Hallway: Painting**, Joan Albaugh, Old Spouter Gallery, Nantucket, MA, (508) 323-9988 or [www.joanalbaugh.com](http://www.joanalbaugh.com). **Pages 84-85: Upstairs hall: Custom-designed cloche**, Greenwich Metal Refinishing Stamford, (203) 977-0494, [www.greenwichmetalfinishing.com](http://www.greenwichmetalfinishing.com). **Bathroom: Fixtures and tile**, Calcutta marble, Waterworks, Danbury, (203) 346-6265, [www.waterworks.com](http://www.waterworks.com). **Bedroom: Plover mantelpiece**, Mike Bado, Old Spouter Gallery.

## WHERE THE BOYS ARE

**Pages 86-93: Interior design**, Diamond Baratta Design, NYC, (212) 966-8892, [www.diamondbarattadesign.com](http://www.diamondbarattadesign.com). **All American: The Exuberant Style of William Diamond and Anthony Baratta**, Pointed Leaf Press, October 2009, [www.barnesandnoble.com](http://www.barnesandnoble.com).

## AMERICAN PASTORAL

**Pages 94-101: Interior design**, Blair Design Associates, Inc., NYC, (212) 595-0203, [www.blairdesignny.com](http://www.blairdesignny.com). **Page 98-99: Kitchen: Floors**, mahogany-and-cherry checkerboard and window valance, Blair Design Associates. **Window valance fabric**, Carmel Ratha Plaid #89630-068, Brunschwig & Fils (T), D&D, (212) 838-7878, [www.brunschwig.com](http://www.brunschwig.com). **Table**, Painted Porch, Sheffield, MA, (413) 229-2700, [www.paintedporch.com](http://www.paintedporch.com). **Chairs**, Nantucket Wing Chair, Wayne Pratt Antiques, Woodbury, (203) 263-5676, [www.prattantiques.com](http://www.prattantiques.com). **Butler's pantry cabinets, kitchen cabinets and walls**, custom Farrow & Ball (T), D&D, (212) 752-5544, [www.farrow-ball.com](http://www.farrow-ball.com). **Living room: Drapery**, Fortuny, [www.fortuny.com](http://www.fortuny.com). **Club chair upholstery**, mohair velvet in Pomegranate, and custom sofa, Blair Design Associates. **Sofa fabric**, Wicklow in Khaki Stripe, Schumacher (T), D&D, (212) 415-3956, [www.fschumacher.com](http://www.fschumacher.com). **Spoon chairs and mahogany cocktail tables**, John Boonic Inc. (T), NYC, (212) 758-0012, [www.johnboonic.com](http://www.johnboonic.com). **Spoon chair fabric**, custom horsehair, and club chair, James, Brunschwig & Fils (T). **Club chair fabric**, P552 in 23 and 38 color ways, Leico Linsen (T) through Henry Calvin Fabrics, Medford, OR, (888) 732-1996, [www.cherrycalvin.com](http://www.cherrycalvin.com). **Rugs**, Natural