

Woman's Day Special Interest Publications

Remodeling & Makeovers™ **WIN**

ZEN PALETTE



AN ASIAN AESTHETIC INFUSES AN ARTS AND CRAFTS KITCHEN WITH A NEW SENSIBILITY

WRITTEN BY BERNADETTE BACZYNSKI

PHOTOGRAPHS BY JOE DEMAIO



LEFT: Though functional, the old kitchen crammed a sink and stove into a corner, leaving little counter space nearby for prep chores.

FAR LEFT: Black cabinets feature custom panels of shoji paper encased in glass. The raised bar has a granite counter and features an open design that mimics the pattern of cabinet door panels. Square-shaped pendants combine elements of Asian and Arts and Crafts styles.

EAST MET MIDWEST WHEN HOMEOWNERS

Melanie and David moved into their vintage Arts and Crafts bungalow in Madison, Wisconsin, seven years ago. Throughout the house, the couple seamlessly blended their collection of oak Stickley mission pieces with assorted objects Melanie, a professor of Asian studies, had collected on trips to China. The kitchen, though recently remodeled, was a different matter.

"My issues were aesthetic more than functional," admits Melanie. "It just wasn't our style." To wit: floral wallpaper, oak cabinets with cathedral-style doors and vinyl floors. Appliances, too, were a bit out of date, and there was limited counter space. They called on designer Lesley Sager, ASID, to help them redesign the space. Sager, of Architectural Building Arts, a design-build firm in Madison, took her cues from the rest of the house and came up with a plan that blended Asian with Arts and Crafts styles and colors. "Melanie also expressed her preference for geometrics and symmetry in the design," says Sager. "David's one request was for a breakfast bar."

Sager began by reconfiguring the cramped triangular work space. In the old design, every point faced a wall, making it impossible for the cook to



take in the panoramic view through the sliding doors. Sager turned the focus outward by installing a new island to house the sink, dishwasher drawers and bar. To create more room for the island, she eliminated the seldom-used cabinets near the dining room door. For convenience, the new counter-depth refrigerator was moved to a location opposite the sink; a new range stayed in its original spot.

New quartz-composite countertops were chosen for their stain-resistance and sturdiness; the golden bamboo floors, chosen for comfort and style, complement the warmth of red walls and the soft, slightly worn look of the black cabinets.

The major focus, though, was on aesthetics. "There's a balance and regularity of form to the room now, dominated by a motif of squares," says Sager. For instance, delicately shaved edges on new black cabinets reveal the natural maple, similar to the colors of the shoji panels and countertops.

In a design inspired by early-20th-century

architect Charles Rennie Mackintosh, the backsplash behind the stove incorporates nine ceramic squares into a background of stainless steel tiles. To achieve the subtle sheen-on-sheen pattern, Sager used one color—copper red, an Arts and Crafts signature shade—in semigloss and high-gloss finishes. Plug strips installed beneath the cabinets keep the wall outlet-free, and the soft dove gray of adjacent walls calls attention to the unique backsplash. Even the bar incorporates a series of square cutouts to reinforce the theme.

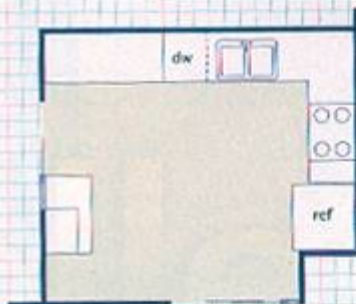
Not one to overlook details, Sager also found translucent-glass pendants with mahogany-finished wrought-iron trim, while cabinet handles bear a pattern inspired by the Mission style of Frank Lloyd Wright.

The new kitchen is now an integral part of the couple's lifestyle. "Before, when we had guests, we served wine in the dining room," says Melanie. "Now we start in the kitchen—the new bar and those warm colors draw everyone into the room." ■

LEFT: A generous storage cabinet occupies the space to the left of the counter-depth refrigerator. Placing the microwave below the counter keeps it from being a focal point. Drainage channels are carved into the counter by the sink.

WHAT WAS DONE

- ▶ Gutted the kitchen; retained the existing footprint
- ▶ Relocated the sink to a new island
- ▶ Installed stainless steel appliances and new cabinets customized with glass-covered shoji-paper insets
- ▶ Used quartz-composite counters on work surfaces; granite on the breakfast bar
- ▶ Incorporated a new storage pantry, lazy Susan and trash/recycling center



BEFORE

The old layout packed the work triangle into one corner, with a counter expanse located away from the main prep space. In addition, the cook always worked with her back to the natural light.



AFTER

Removing a wall of counters created space for a large, permanent island, which features a raised bar. By relocating the sink to the island, designer Lesley Sager reoriented prep areas to the view and created more workspace by the stove.



ABOVE: The couple used an inexpensive island on wheels to bring counter space where they needed it.

RIGHT: The range is showcased beneath a simple stainless hood and custom backsplash of black ceramic and stainless steel tiles, while cabinets complement the existing black beam. Dishwasher drawers are handy to the island's sink.



buying guide

Wild for Color Pages 54-61:

Designer/furnishings, Andrew Wilder, Svenska Möbler. **Ceiling light**, Paper Trail. **Paint**, Behr. **Countertops and cabinets**, Ikea. **Chair fabric and duvet cover**, Michael Levine. **Rug**, Bloomingdale's Home Store.

Zen Palette Pages 62-65:

Architect, Lesley Hayman Sager. **Contractor**, Architectural Building Arts, Inc. **Cabinets**, Greenfield Cabinetry. **Range**, Wolf. **Refrigerator**, Sub-Zero. **Dishwasher**, Fisher & Paykel. **Sinks and faucets**, Elkay. **Counter surfacing**, CaesarStone. **Lighting**, Hubbardton Forge. **Bamboo flooring**, Smith & Fong Plyboo. **Cabinet hardware**, Emenee. **Paint**, Sherwin-Williams.

Mellow Yellow Pages 66-69:

Designer, Jennifer Gilmer, Jennifer Gilmer Kitchen & Bath. **Refrigerator**, Sub-Zero. **Warming drawer**, Thermador. **Microwave**, GE. **Wine cooler**, U-Line. **Cabinetry**, Sterling Custom Cabinetry. **Kitchen faucet**, Waterworks. **Wall fan**, NuTone. **Kitchen tile**, Ann Sacks.

Color Forms Pages 70-75:

Architect/interior designer, Elterman Finer Architects. **Contractor**, Home Improvement. **Cabinets**, custom, James Wood Works. **Cabinetry veneer**, Tabu. **Range**, Wolf. **Refrigerators and wine-storage unit**, Sub-Zero. **Faucets**, Dornbracht. **Dishwasher**, Miele. **Desk backsplash**, Chemetal. **Lighting**, Tech Lighting. **Glass shelving frame**, Hudson Studios. **Shelf hangers**, Jakob, Inc.

Cool Hues Pages 76-83:

Kitchen cabinets, Columbia Cabinets. **Bathroom cabinets**, Ikea. **Cooktop, oven, range, refrigerator and microwave**, Jenn-Air. **Beverage drawer**, Lowe's. **Bathroom sink**, Kohler. **Bathroom tile**, Dal-Tile. **Faucets and shower fittings**, Danze. **Toilet**, Toto. **Counters**, Oceanside Glasstile. **Vanity**, custom design by Nick Stojkovic, produced by Allied Steel Fabricators. **Lighting**, Ikea. **Paint**, Benjamin

Moore. **Windows**, Milgard Windows & Doors. **Kitchen sink, flooring and bed panels**, The Home Depot. **Bedding**, Macy's. **Nightstand and lamps**, Crate & Barrel.

A Different Green Pages 84-87:

Designer, Robert Huffman. **Kitchen plumbing**, Raymark Plumbing. **Electric, tile and floor**, Fryer-Knowles. **Counter**, PaperStone; **flooring**, Marmoleum; and **backsplash**, Oceanside Glasstile; all Ecohaus. **Pass-through counter**, Kirel. **Lighting**, YLighting. **Dishwasher and refrigerator**, Miele. **Baseboard molding**, Just Green. **Hot-water faucet**, Ira Wood & Sons.

A Hint of Tint Pages 88-91:

Designer/lighting, Henri Laborde, Laborde Architecture. **Contractor**, Camber Construction. **Cabinets**, Randall Wilson & Sons Inc. **Cooktop, oven and microwave**, Thermador. **Range hood**, custom, Steffan Long. **Refrigerator**, Sub-Zero. **Sink**, Franke. **Dishwasher**, Miele. **Backsplash**, Ann Sacks.

True Blue Pages 92-97:

Designer, Lonnie Unger, Susan Fredman & Associates. **Contractor, cabinets and hardware**, At Home With Nature. **Sink**, Linkasink. **Faucets**, Jado. **Shower fittings**, Hansgrohe. **Paint**, Benjamin Moore.

sources

Allied Steel Fabricators
425-861-9558
alliedsteelfab.com

Ann Sacks
800-278-8453
annsacks.com

Architectural Building Arts, Inc.
608-233-2106
designbuildmadison.com

At Home With Nature
877-732-9640
susanfredmanathome.com

Behr
877-237-6158
behr.com

Benjamin Moore
benjaminmoore.com

Bloomingdale's Home Store
866-593-2540
bloomingdales.com

CaesarStone
818-779-0999
caesarstoneus.com

Camber Construction
510-843-3841
camberconstruction.com

Chemetal
800-807-7341
chemetalco.com

Columbia Cabinets
604-850-3538
columbiacabinets.com

Crate & Barrel
800-967-6696
crateandbarrel.com

Dal-Tile
214-398-1411
daltile.com

Danze
888-328-2383
danze.com

Dornbracht
800-774-1181
dornbracht.com

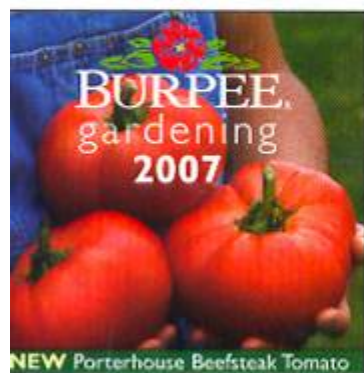
Ecohaus
800-281-9785
environmentalhomecenter.com

Elkay
630-572-3192
elkay.com

Elterman Finer Architects
212-875-9795
eltermanfinerarchitects.com

Emenee
718-466-4650
emenee.com

Everpure
800-323-7873
everpure.com



BURPEE GARDENING

From one-of-a-kind tomatoes and peppers to unique and exotic flowers and perennials. Seeds and plants for home gardeners. Visit us at www.burpee.com or call 1-800-888-1447.

