

# KITCHEN AND BATH IDEAS

## 10 things to love about this kitchen

WRITTEN BY  
GARY THOMPSON  
PHOTOGRAPHED BY  
ANTHONY MASTERS  
FIELD EDITOR  
LESA MOWEN  
PHOTO STYLING  
ANNETTE JOSEPH



### Warmth & Whimsy

Fanciful meets functional in a kitchen where candy color, casual character, and Spanish accents put everyone at ease.

#### 1. LIGHTHEARTED ISLAND LAYOUT

A six-foot island anchors the bright, open, and fun kitchen of Jodie and Rick Hammesfahr's new Atlanta home. "I can't

remember the last time we used the formal dining room," Jodie says. "It's more fun to have everyone around the island." Part of the fun? Hydraulic stools and bins filled with candy.

## 10 things to love about this kitchen

### 2. EYE-CATCHING ICEBOX DOORS

With help from kitchen designer Mary Kathryn Calonge, a member of the National Kitchen & Bath

Association (NKBA), Jodie gave the refrigerator doors the same bold yellow as other cabinets, then added two chalkboard panels and a punched-in ventilation

grille inscribed with a whimsically chilly message. "Refrigerators with cabinet panels are so common," Jodie says. "I wanted mine to have flair."

### 3. A PALETTE WITH PERSONALITY

Mustard-yellow cabinetry cues a palette of playful colors. "I did not want the kitchen to feel formal in

any way, it's just not our style," Jodie says. "You can't help but get the sense that you can relax, let your hair down, and enjoy yourself in this room."



### 4. BASIC BLACK FOR BALANCE

Black elements and accents ground the brighter hues, Jodie says. "When you use a strong color like the mustard, you need some warmth and balance, which the black pieces provide."

### 5. ABUNDANT BRICKWORK

The use of brick is part of the Spanish feel Jodie sought to create. "A lot of homes throughout Mexico and Spain used brick as the interior wall surface because it did not need to be insulated," she says.



### 6. FUSS-FREE FIREPLACE

A corner fireplace adds warmth—both visually and literally. The easy-start gas unit, framed by more of the classic brick,

provides extra heat on cold days. "I had considered doing a woodburning fireplace when we began the design phase," Jodie says, "but quickly turned away from that when I

imagined myself having to get wood from outside at 6 in the morning when I was trying to get my daughter off to school. It was one of those ideas that sounds great on paper."



## 10 things to love about this kitchen

### 7. ENTERTAINING EATING AREA

The eating area's Spanish-*feel* light fixture, hefty walnut table, and brightly painted ladder-back chairs

make for festive meals. Jodie says the table and matching sideboard are brand-new but look 100 years old. The lights, attached to a Mexican

corbel, simulate real candles. "They give off a rich, warm glow when lit at night," Jodie says. A painted floorcloth incorporates the bold

colors of the kitchen to complete the look. "I love the open feeling between the kitchen and the breakfast area," Jodie says. "The range was placed

behind the sideboard wall, so that whoever is cooking can continue to cook and speak to people seated at the table without turning their back to them."

### 8. EASY-TO-USE PANTRY SPACE

Jodie uses her pantry to store serving pieces as well as food items. "I like having them all out in front of me so that I can pick and choose what to use, as if I were in my closet, picking my outfit for the day," she says.

### 9. TREASURED TEA CABINET

A wall-hung cabinet holds tees and displays heirloom canisters. "My grandmother and my mother were amazing cooks," Jodie says, "and those canisters bring back such great memories every time I look up and see them."



### 10. SWEET SOFT-DRINK STATION

The pantry includes a soft-drink station that's a favorite spot for the couple's teen daughter, Lexie, and her friends.

"The work space was added so that we would have space for our drink gadgets and syrups," Jodie says. "We try to be healthy and have fun with it, so smoothies are a big part of

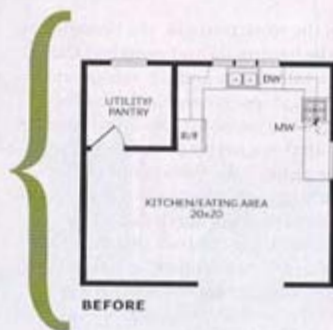
our daily regimen. The kids love to make [them] when they come to swim, and the syrups are a big hit." The cabinets below hold small appliances. **KBI** RESOURCES BEGIN ON PAGE 130.

# KITCHEN AND BATH IDEAS

## 1 kitchen, 2 budgets

A makeover to fit your budget—high or low.

WRITTEN BY  
MEGAN BOETTCHER



## Done with Drama

A misfit kitchen gets a makeover that takes it from a dated dud to a dramatic Art Deco design.



*Elina Katsioula-Beall, a certified kitchen designer (CKD) and member of the National Kitchen & Bath Association (NKBA), is President of DeWitt Designer Kitchens in Studio City, California.*

“A kitchen breathes when it is beautiful in design, function, and style. It transcends the ordinary and feels fresh.”

—ELINA KATSIIOULA-BEALL, CKD

### the problems

#### ▪ LACK OF STYLE

The kitchen is old, and materials are worn out. It is missing a sense of architectural style and personality.

#### ▪ LIMITED SPACE

The countertop area is inadequate for today's prepping and cooking needs. It's very difficult for more than one cook to work in the room.

#### ▪ POOR CONFIGURATION

Space is wasted in the middle of the room. It is too small for an island, and the U-shape configuration places appliance doors in conflict with one another.

#### ▪ OUTDATED CABINETRY

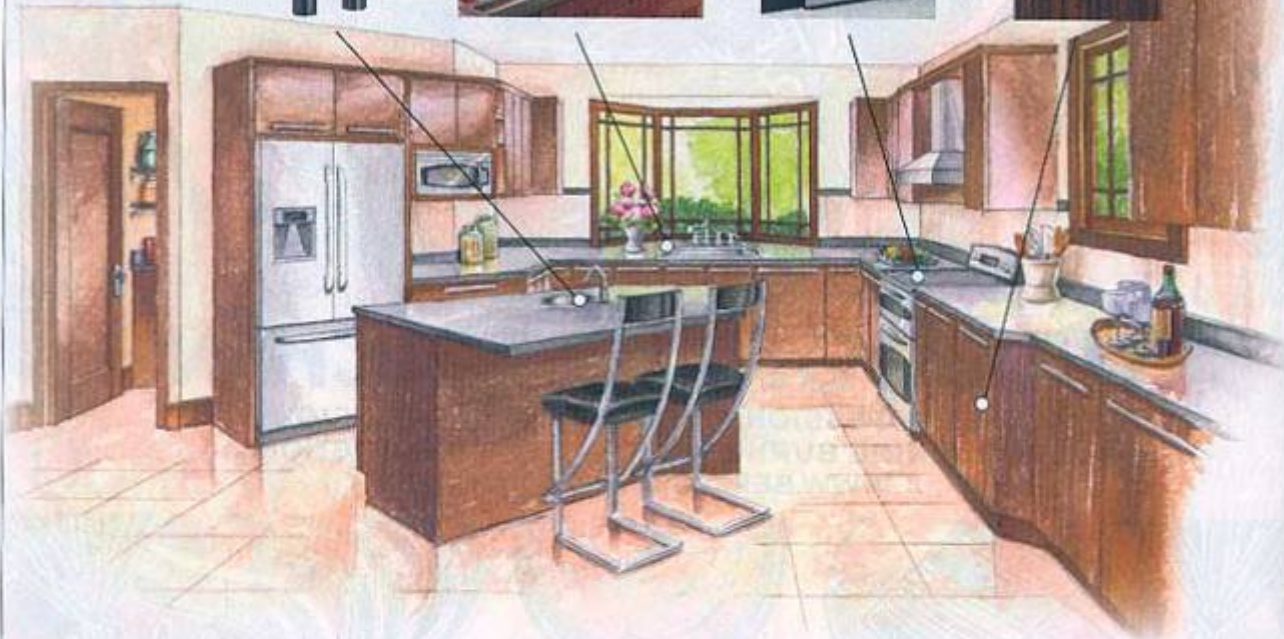
The cabinets have many layers of paint, and the colors are outdated. The cabinets are also lacking functional storage.

#### ▪ TOO-BRIGHT APPLIANCES

Bright white appliances stand out in sharp contrast to the colored cabinetry.

# 1 kitchen, 2 budgets

## Value



## the solutions

### • ADD SPACE

Borrowing space from the adjacent utility closet and angling the wall allows enough room for an island with a prep sink and a cozy café counter. Bumping out the sink window also adds to the open feel.

### • REARRANGE PLACEMENT

Moving the range-wall window opens a wall for additional cabinetry and counter space. It also allows for the range to slide to the right, eliminating the conflict with the dishwasher and oven doors.

### • REFRESH CABINETY

The new cabinetry is dark and sleek. It infuses the room with energy.

### • INCLUDE STYLISH DETAILS

A black trim line cuts through the contrasting travertine tiles on the backsplash to evoke an architectural look.

### • USE REFLECTIVE SURFACES

Black granite countertops, stainless-steel appliances, and a sleek backsplash complement the Art Deco style.



AFTER

**Simplice pull-down faucet**  
K-647 | \$295  
Kohler Co.  
800/456-4537  
us.kohler.com

**Culinaire undermount, dual-level sink** | \$742  
American Standard  
800/442-1902  
americanstandard-us.com

**GE Profile freestanding, double-oven range**  
PGB918SEMSS | \$2,199  
GE  
800/626-2005  
geappliances.com

**Slab door cabinetry LP112H** | prices vary  
Columbia Cabinets  
604/850-3538  
columbiacabinets.com

## value budget breakdown

### APPLIANCES

GE Profile bottom-freezer	\$ 2,549
GE Profile freestanding, double-oven range	\$ 2,199
GE Profile fully integrated dishwasher	\$ 1,329
2 InSinkerator Evolution Compact disposals	\$ 338
GE Profile microwave oven	\$ 269

### CABINETY

Columbia Cabinets in dark zebrano melamine	\$26,740
--	----------

### SURFACES

Black granite countertops	\$ 2,430
18x18-inch travertine tile flooring	\$ 1,625
Travertine, black tile, and metal backsplash	\$ 1,375

### MISCELLANEOUS

American Standard Culinaire sink	\$ 742
Elkay Limestone single-bowl sink	\$ 419
Kohler Simplice pull-down faucet	\$ 295
Kohler Simplice faucet	\$ 295

**TOTAL** \$40,605

prices are estimates, excluding installation

# 1 kitchen, 2 budgets

## Custom



## the solutions

### • CREATE A FOCAL POINT

The cooking wall, with a custom Art Deco metal sculpture and curved countertop and hood, commands attention.

### • EXPAND SPACE

Incorporating extra room from the adjacent utility closet opens up the kitchen for a large central island.

### • DIFFERENTIATE SURFACES

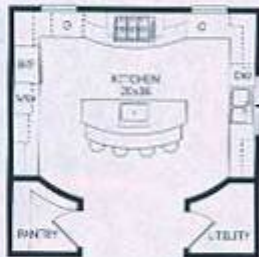
Solid black granite countertops on the perimeter blend with a colorful cosmic black granite surface on the island.

### • UPGRADE THE FLOORING

The Roman travertine floor is inlaid with a stainless-steel design. The matching metal-and-tile backsplash completes the new age look.

### • ACCENTUATE THE STYLE

New windows on each side of the cooking area emphasize symmetry, and the two-tone grain of the cabinetry enhances the vertical architectural style of the kitchen.



AFTER

**Slab door cabinetry | prices vary**  
Corsi Cabinet Co.  
800/999-7606  
corsicabinets.com

**H4780BP oven | \$3,199**  
Miele  
800/883-4537  
miele.com

**Nobel double sink NAX660 | \$522**  
Franke Kitchen Systems  
800/626-5771  
frankeskd.com

**Franke faucet FF1780 | \$1,742**  
Franke Kitchen Systems  
800/626-5771  
frankeskd.com

## custom budget breakdown

### APPLIANCES

2 Miele single ovens H4780BP	\$ 6,398
Miele MasterCool 36-inch refrigerator	\$ 5,700
Modern Aire custom hood	\$ 4,250
Miele cooktop KM3485	\$ 1,549
Miele Inspira dishwasher G2180SCVI	\$ 1,299
2 InSinkerator Evolution disposals	\$ 430
GE Profile microwave oven	\$ 269

### CABINETS

Corsi cabinetry in Sapele Pomelli	\$48,500
-----------------------------------	----------

### SURFACES

Black and cosmic black granite countertop	\$ 3,808
Stainless-steel and travertine backsplash	\$ 2,750
18x18-inch travertine tile flooring	\$ 2,400
Inlaid stainless-steel trim	\$ 960

### MISCELLANEOUS

Metal sculpture	\$ 6,800
Franke faucet FF1780	\$ 1,742
Franke faucet FF1450	\$ 1,252
Franke Oceania prep sink OAX610	\$ 858
Franke Nobel double sink NAX660	\$ 522
Franke sink accessories	\$ 361

### TOTAL

	\$89,848
--	----------

prices are estimates, excluding installation

# resources



## {34-38} 10 THINGS TO LOVE ABOUT THIS KITCHEN

Kitchen designer—Mary Catherine Calonje, NKBA member. Architect—Eduardo Contreras. Interior designer—Jodie Brown Hammesfahr. Range—Monogram dual fuel microwave Profile—GE Appliances. Refrigerator—Sub-Zero Freezer Co., Inc. Dishwasher drawers—Fisher & Paykel Appliances, Inc. Cabinetry—Downsview in distressed Mustard Yellow and Black glaze—Design Galleria. Cabinetry hardware—Arbesanos Imports Co. Countertops—Black Galaxy marble—G&L Marble, Inc. Sink—Celebrity in stainless steel—Ekay Manufacturing Co. Faucet—Promaster—Kohler Co. Pendants over sink, barstools—C Lighting. Chandelier in eating area—No Mas Productions. Chandelier in pantry—Pottery Barn. Fireplace insert—Metro House of Fire. Dining table, chairs—Daniel McGrotha. Striped rug—Terry Montgomery. Mixers, blender, shake machine—KitchenAid. Coffeemaker—Nespresso.