



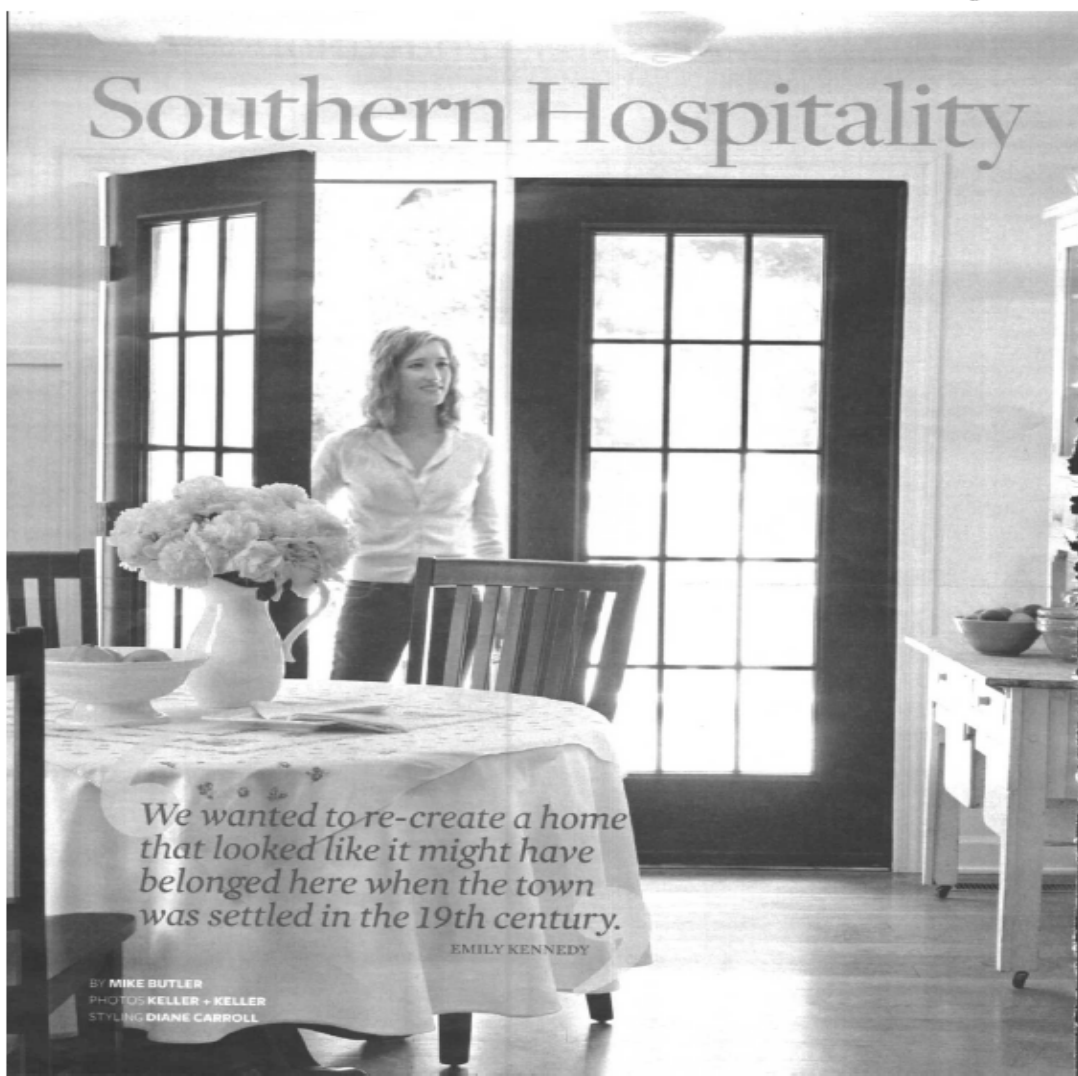
CONTEST WINNER **KITCHEN**

Growing up in southern Tennessee, riding around with her country doctor dad, Emily Kennedy always admired the tree-lined farm she passed on rural Robin Lane. "It was the most beautiful setting," she recalls. "I started planning my dream home back then."

When she and her husband, Kerry, had the opportunity to buy the property a few years ago, they couldn't believe their luck. The old farmstead had been torn down in 1992 and replaced with an 1,800-square-foot, 1½-story home built in the farmhouse style. The Kennedys liked the home's generous porches, and Emily could bring her vision of a welcoming country kitchen to life.

Drawing on memories of both her grandmothers' kitchens, Emily punched a trio of double-hung windows into the sink wall to bring the dark kitchen into the light. Although she would have preferred a 10-foot ceiling, Emily gave the 8-foot one she had more prominence with coffered beaded board. High wainscoting, capped by 1-inch molding, also gives the kitchen an illusion of height. More architectural drama comes from arched doorways and an arched alcove that neatly houses the refrigerator and freezer.

"The stainless-steel appliances have a contemporary edge," says Emily, "but I think the overall effect is timeless. The kitchen feels very cozy, warm, and inviting to me."



Southern Hospitality

We wanted to re-create a home that looked like it might have belonged here when the town was settled in the 19th century.

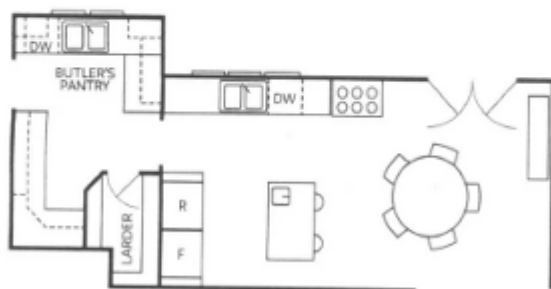
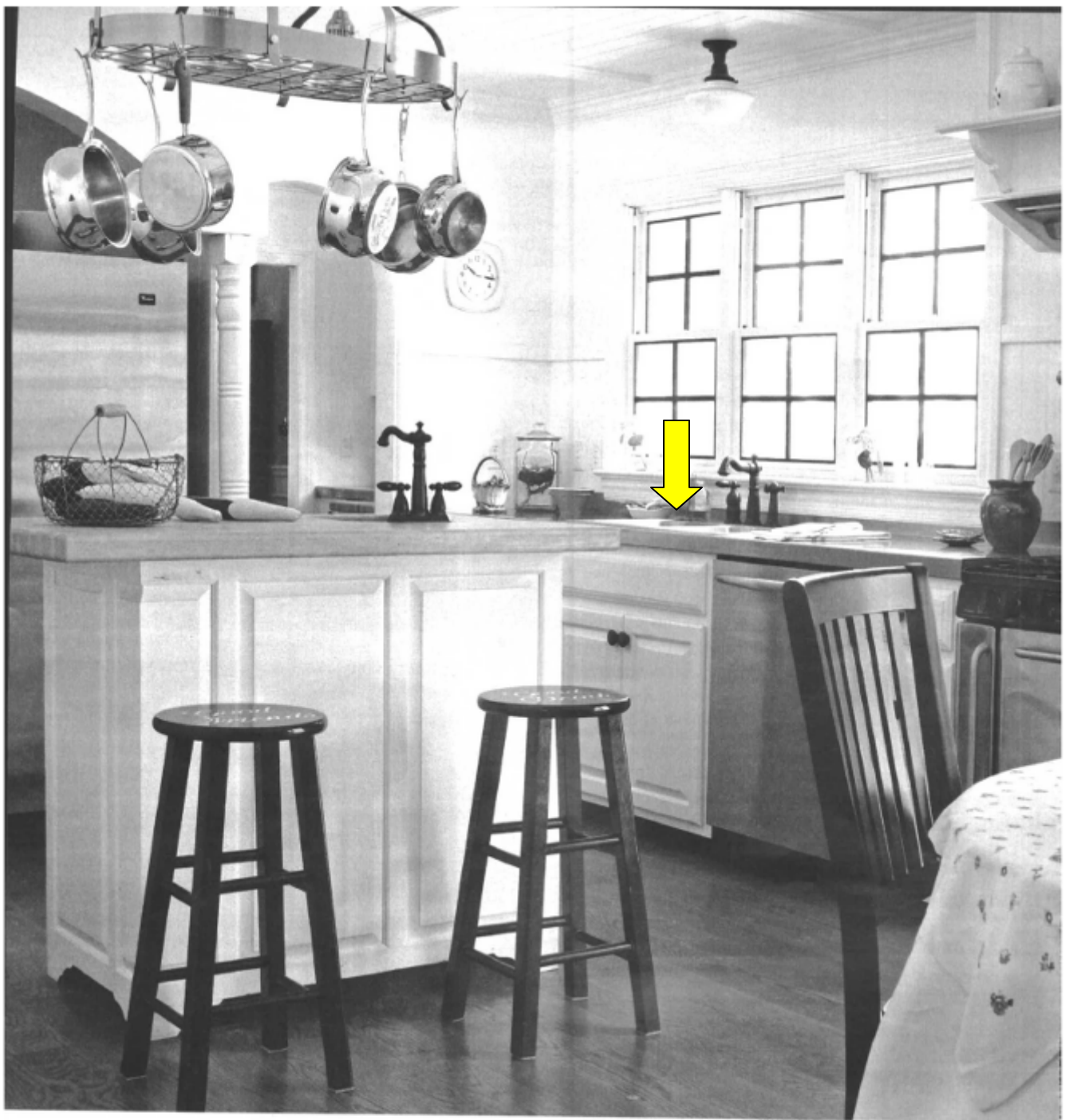
EMILY KENNEDY

BY MIKE BUTLER
PHOTOS: KELLER + KELLER
STYLING: DIANE CARROLL



The 264-square-foot remodeled kitchen holds an informal dining area, *opposite*, and a freestanding vintage hutch. But life for Emily and Kerry Kennedy, *top*, their three daughters—Claire, Catherine, and Annelise—and five dogs mostly revolves around the home's porches. Conveniently located between the kitchen and dining room, the large butler's pantry, *right*, keeps heirloom china and crystal ready for entertaining.





The 7x15-foot butler's pantry shown on the floor plan, left, provides plenty of storage and allowed Emily to create an open kitchen without upper cabinets. A few old base cabinets were used to construct the maple-topped island, above. The pantry's double sink and dishwasher also facilitate party cleanup and keep the kitchen focused on prep, cooking, and pan-washing.

Cookbooks, countertop appliances, spices, and other food items find a home in the 4x7-foot larder, opposite top. In her grandmother's day, the old country hutch, opposite, would have stored everyday dishes on its shelves and flour and sugar in its lower bins. Emily uses the piece to display colorful antique tablecloths, greenware, and other china. "We always wanted to build a kitchen around it."

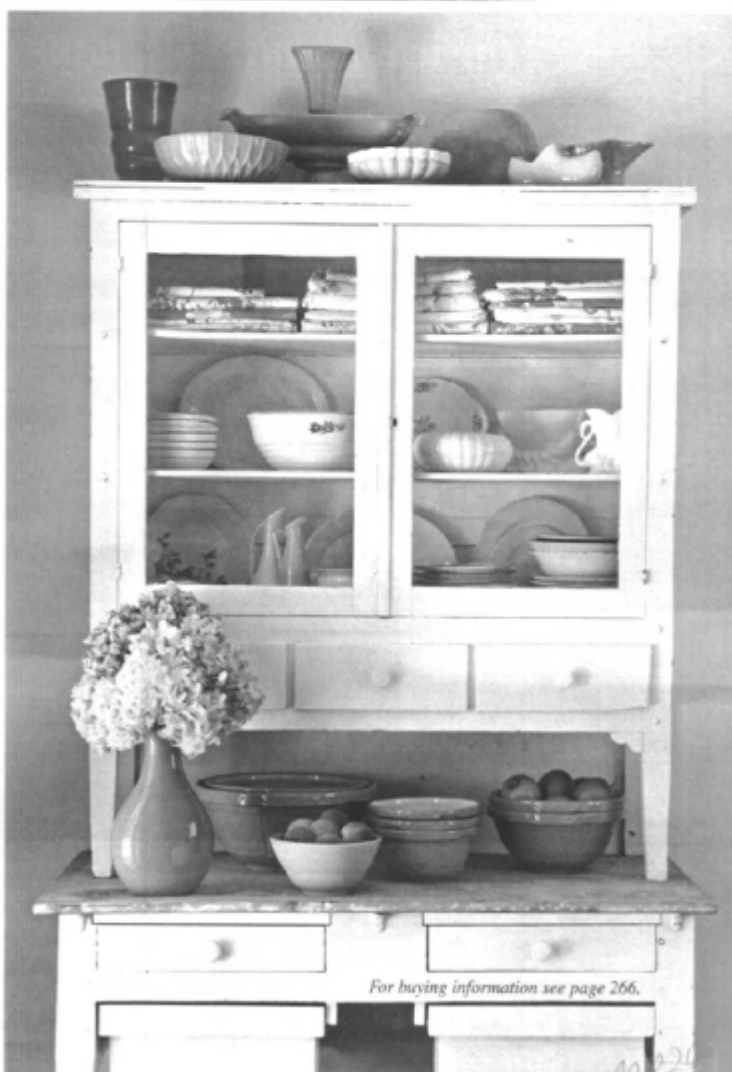
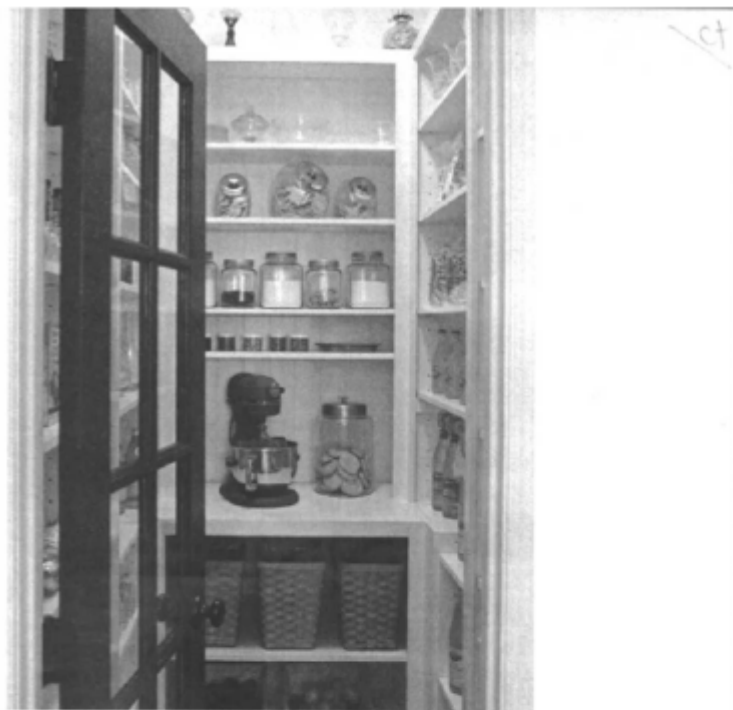


WINNING WISDOM

from Emily Kennedy

• **Appliances don't have to cost a fortune.**

"Living in a small town forced me to shop online. I found the six-burner gas range for \$1,400. When I saw what a 60-inch refrigerator-freezer cost, I bought separate but identical 30-inch units and put them side-by-side with the handles in the middle."



For buying information see page 266.

Pages 164–167: architectural designer—Doug Augustin; 931/853-6262. Interior designer—Emily Kennedy, Emily Kennedy Designs; 256/710-3416. Contractor—Beckman Woodworks; 931/853-6482. Windows throughout—Arndt & Herman; 866/204-3139; arndtandherman.com. Beaded board—Design the Space; 866/983-3267; designthespace.com.

Pages 164–165: table—Robin Lane Goods; 256/710-3416. Chairs, “Helena Chair” (Black)—World Market; 800/267-8758; worldmarket.com (product line varies).

Tablecloth, china—Williams-Sonoma; 800/541-2233; williams-sonoma.com.

Pages 166–167: range—Premier Gas and Electric Ranges; 800/858-5844; premierrange.com. Vent, refrigerator—Whirlpool Corp.; 866/698-2538; whirlpool.com.

Dishwasher—Maytag; 800/688-9900; maytag.com.

Sink in Island—Revere Sink; reversesink.com. Perimeter sink—Elkay Mfg. Co., Oak Brook, Illinois; 630/574-8484; elkayusa.com. Faucets—Delta Faucet Co.; 800/345-3358; deltafaucet.com. Pot rack, light fixtures—Lowe’s; 800/445-6937; lowes.com. Dining table, bar stools (purchased unfinished), bird nest collection at corner near sink—Emily Kennedy Designs; 256/710-3416. Bar stools (unfinished) bird nest collection at corner near sink—Robin Lane Goods; 256/710-3416.